

Sierra Central Railroad Operator Training

Sacramento Passenger Yard



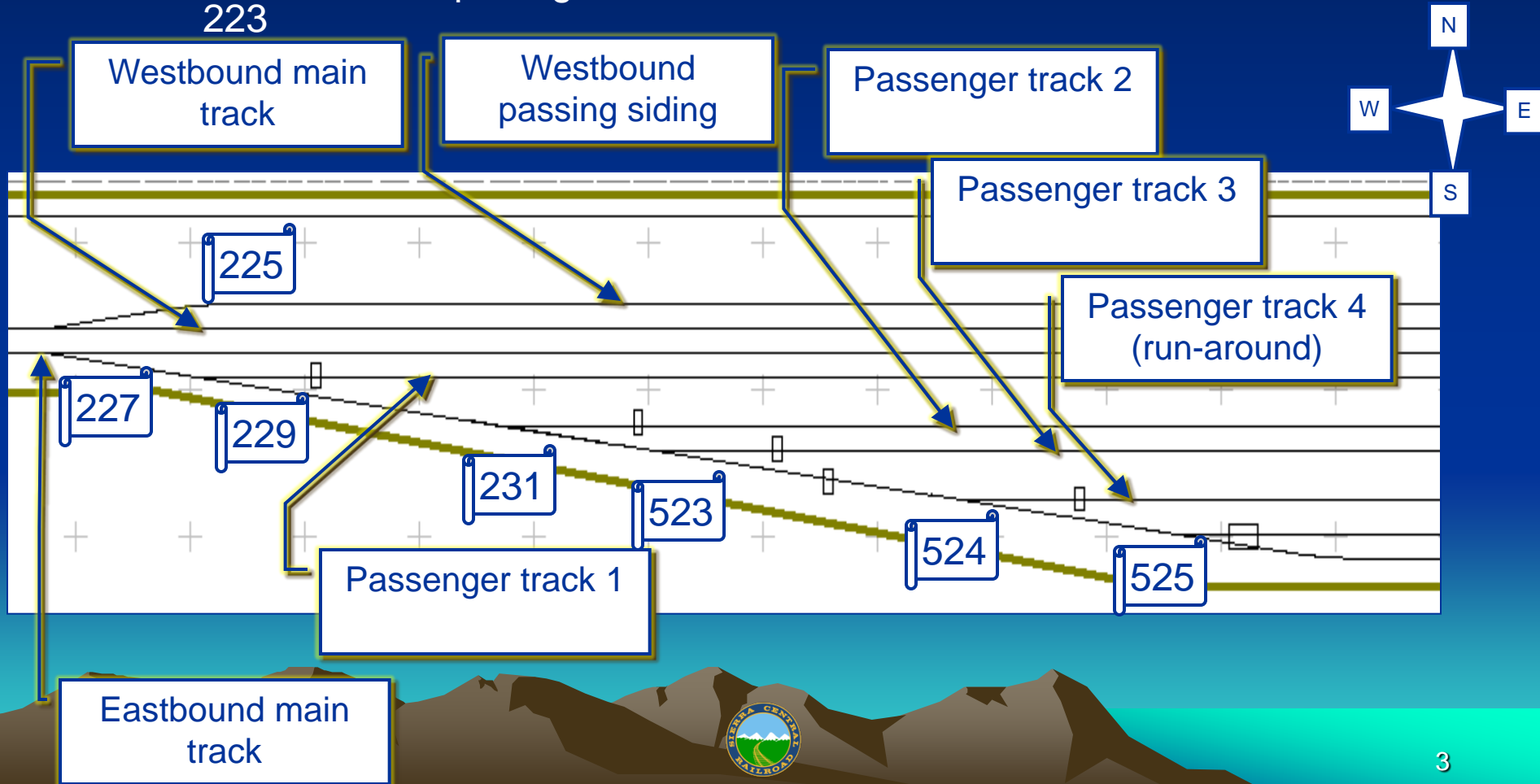
Sacramento Passenger Yard

- Training objectives
 - Show proficiency using yard control panel
 - Show understanding of mainlines versus sidings
 - Identify west and east –bound mains
 - Show understanding of how to arrive/depart trains with regards to Mikon and Sacramento crossovers
 - Show how to log-on a departing train
 - Show how to log-off a terminated train

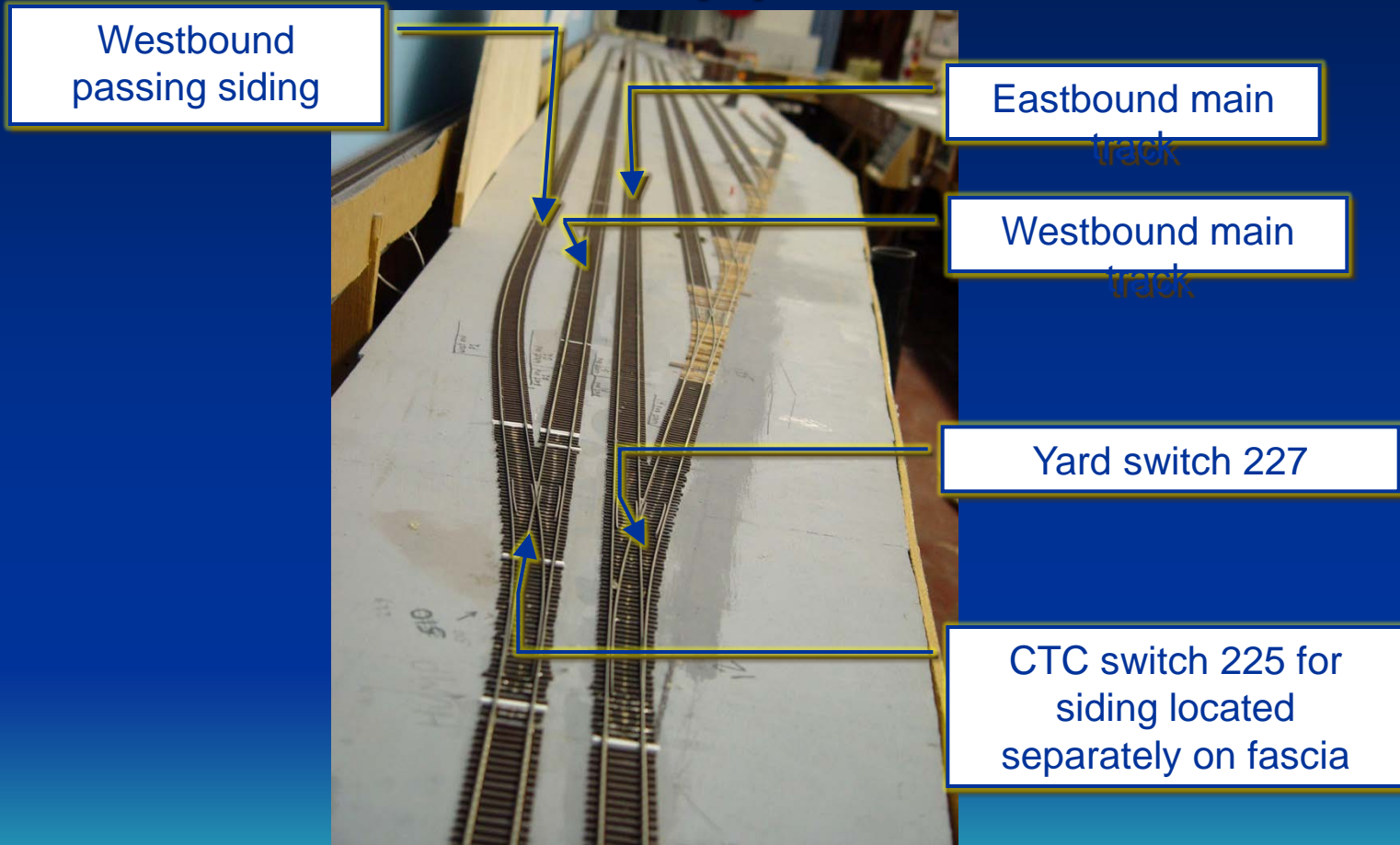


Sacramento Passenger Yard

- West yard limit
 - Switch 227 should be left thrown to main
 - Westbound departing trains will need to take the Mikon crossover switch 223

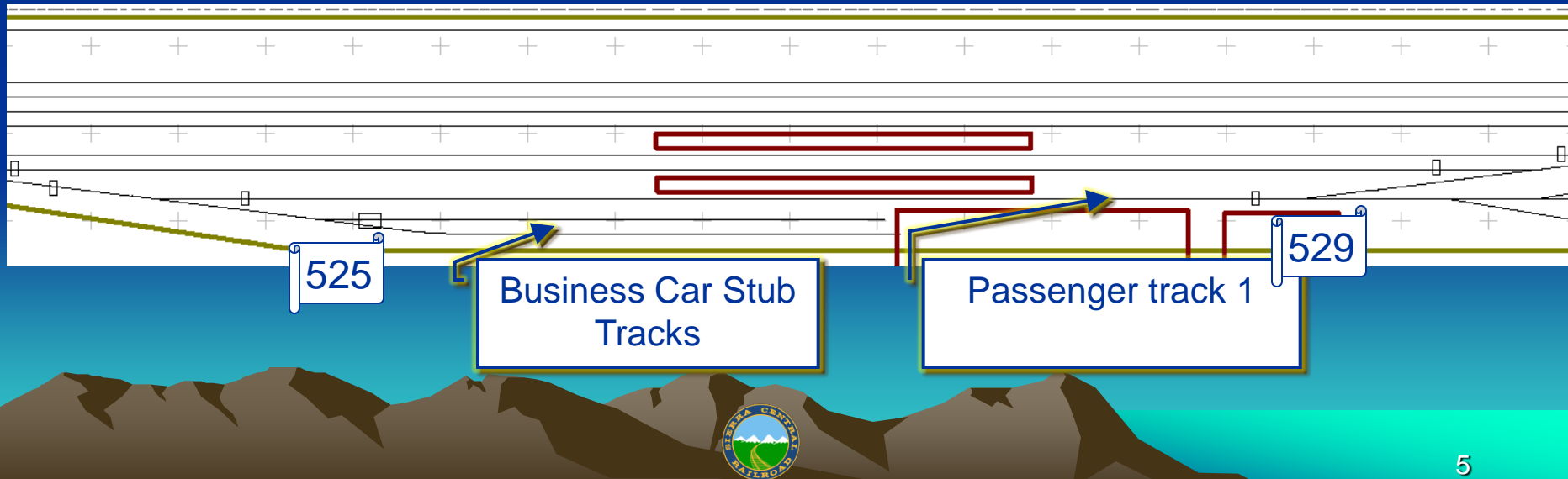
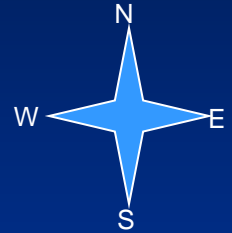


Sacramento Passenger Yard West Approach



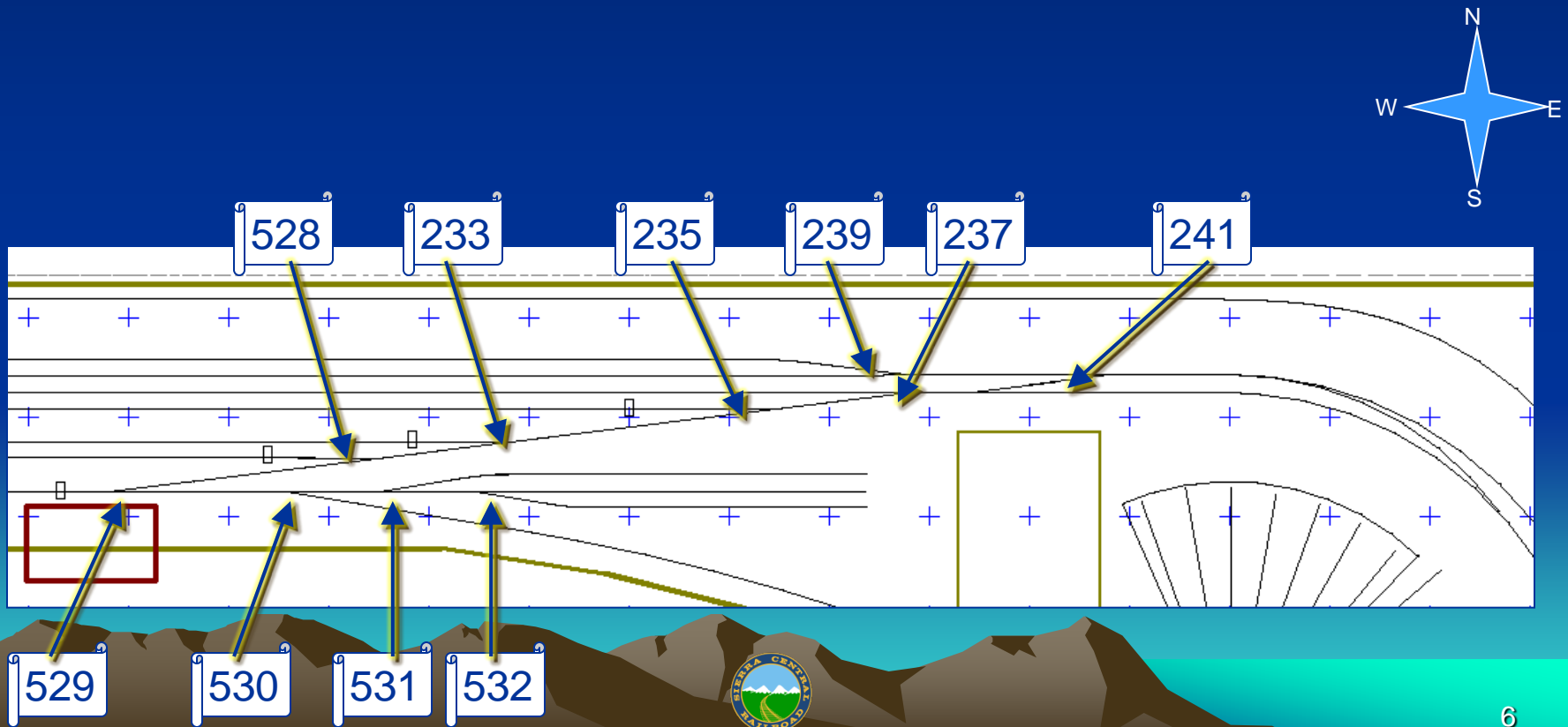
Sacramento Passenger Yard

- Business Car tracks (2), switch 525
- Switch 529 to engine tracks
- Note: passenger track 4 is normally left open as run-around for engines

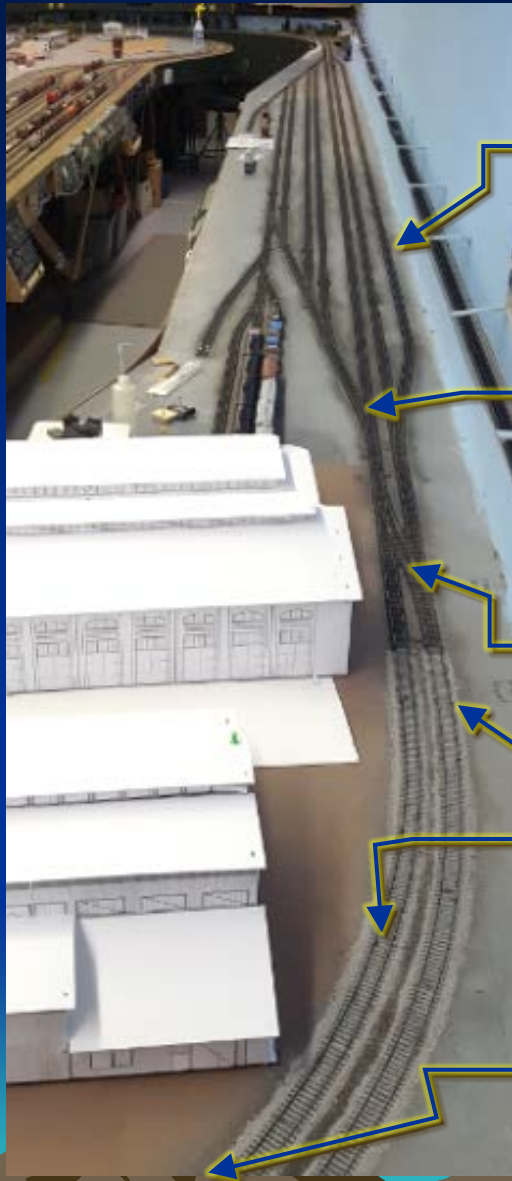


Sacramento Passenger Yard

- East yard limit
 - Switch 237 should be left thrown to main
 - Incoming westbound trains will need to cross over at switch 241



Sacramento Passenger Yard East Approach



Westbound
passing siding

West Yard Limit, Switch 237

Crossover, Switch 241

Westbound Main

Eastbound Main

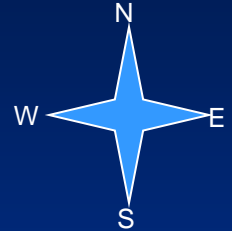
Crossover, Switch 243



Sacramento Passenger Yard

- Yard Control Panel
 - Lockout for
 - On/Off buttons
 - Switch position LED's

Yellow LED – lockout indication for yard limit switches 227, 237



On/Off buttons-if red LED is on, track is on

Switch position LED's highlight diverging route when selected

