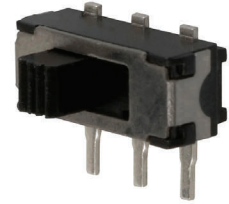


On/Off Switch for Digitrax 400/402 Throttle

The switch is a small slide switch, EG1847-ND, from DigiKey Electronics. <http://www.digikey.com>. It cost about \$1.00. Drill and file a rectangular hole in the bottom of the throttle as shown so the slide part of the switch just fits. Cut the orange battery wire so that it can be soldered to a switch lug. Add a wire to the remaining wire that will be long enough to connect to the switch. Solder as shown below. Glue in the hole.



We have installed these switches in about 7 throttles used at our Society. Since the installation does not require taking the throttle apart the warranty should be valid. We have sent several throttles with the switches to Digitrax service and have had no problems.

